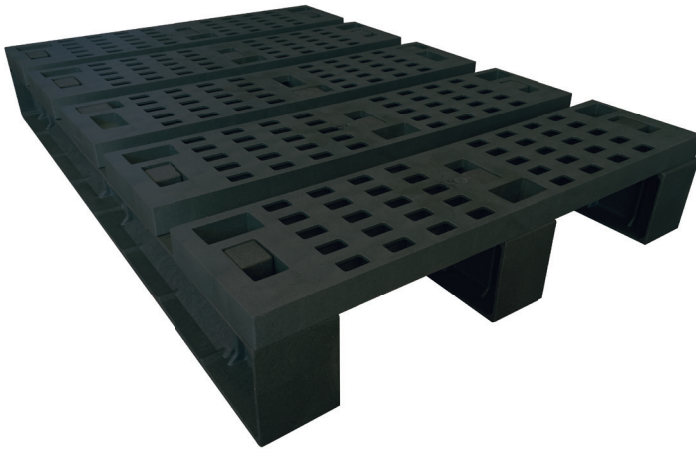


# EUROPEAN SKID 1200x800



interchangeable pieces



Material Recycled



Chemical Resistance



Prevents biological contamination

## SPECIFICATIONS

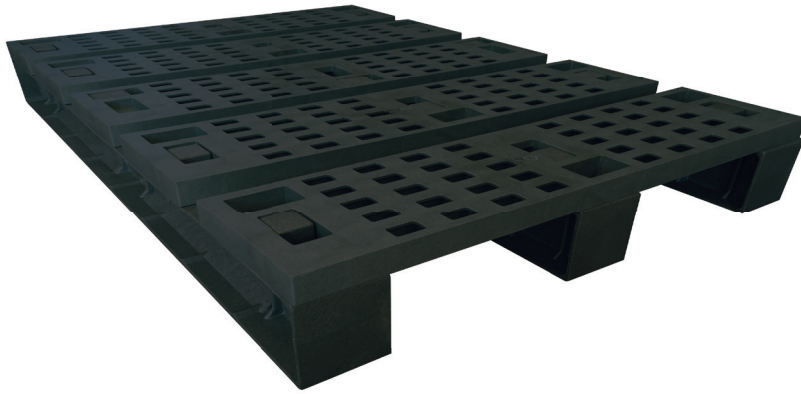
|               |               |          |            |          |                 |
|---------------|---------------|----------|------------|----------|-----------------|
| Weight:       |               | 18KG     | Material:  | Recycled | inch            |
| LOAD CAPACITY | Static Load:  | 5.000 kg | DIMENSIONS | Length:  | 1200 mm / 47 in |
|               | Dynamic Load: | 1650 kg  |            | Width:   | 800 mm / 31 in  |
|               | Rack Load:    | 1200 kg  |            | Height:  | 170 mm / 7 in   |

Plastic skid with standard dimensions, high load capacity and resistance. Interchangeable side-rails and cross-members.

The Logicpalet is reinforced in order to get the highest safety in racking.

It is ideal for reusing in logistical circuits or storage, as well as for inverse logistic procedures.

- Longer life cycle
- Resistant Versatile
- Hygienic
- Protection
- Environmental

**AMERICAN SKID**
**1200x1000**


interchangeable pieces



Material Recycled



Chemical Resistance



Prevents biological contamination

**SPECIFICATIONS**

|               |               |          |            |          |                 |
|---------------|---------------|----------|------------|----------|-----------------|
| Weight:       |               | 20KG     | Material:  | Recycled | inch            |
| LOAD CAPACITY | Static Load:  | 5.500 kg | DIMENSIONS | Length:  | 1200 mm / 47 in |
|               | Dynamic Load: | 1800 kg  |            | Width:   | 1000 mm / 39 in |
|               | Rack Load:    | 1300 kg  |            | Height:  | 170 mm / 7 in   |

Plastic skid with standard dimensions, high load capacity and resistance. Interchangeable side-rails and cross-members.

The Logicpalet is reinforced in order to get the highest safety in racking.

It is ideal for reusing in logistical circuits or storage, as well as for inverse logistic procedures.

- Longer life cycle
- Resistant Versatile
- Hygienic
- Protection
- Environmental